

GLOBAL
SOCIAL
LEADERS

GIRLS GLOBAL CATALYST HANDBOOK

FOR PARTICIPANTS, PARENTS & TEACHERS



**"AFTER BEING AT GSL I HAVE SEEN THREE BIG CHANGES WITHIN ME.
THE FIRST WAS ABOUT DREAMS, THE SECOND ABOUT PURPOSE,
AND THE LAST ABOUT BEING A PERSON."**

–Cayson Chong, Raffles Institution, Singapore

WWW.GLOBALSOCIALLEADERS.COM



GLOBALSOCIALLEADERS

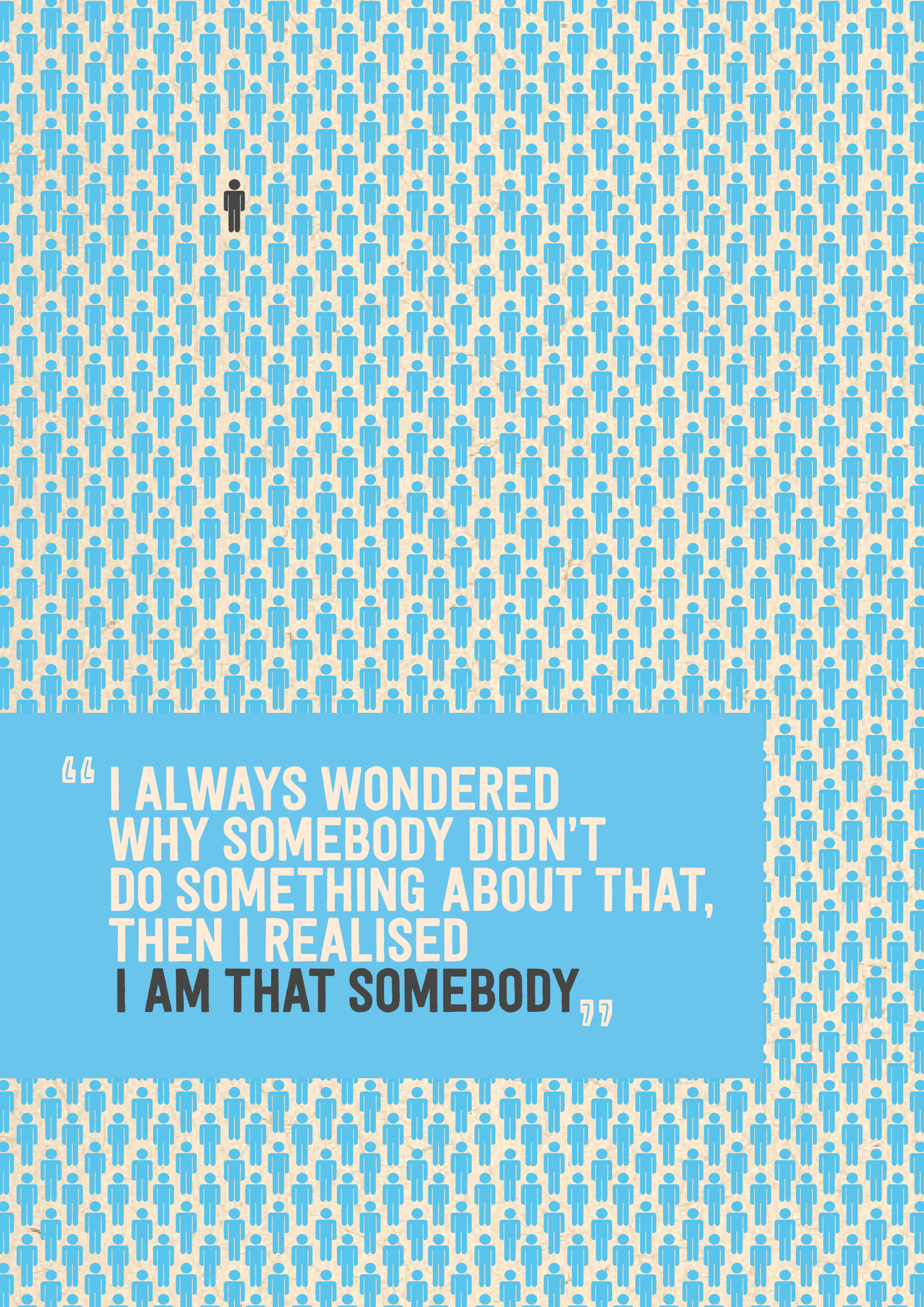


WELLINGTON
COLLEGE



Wellington Leadership
Institute





“ I ALWAYS WONDERED
WHY SOMEBODY DIDN'T
DO SOMETHING ABOUT THAT,
THEN I REALISED
I AM THAT SOMEBODY”

CONTENTS

PROGRAMME INFORMATION

What is the Global Social Leaders Programme	3
Who is behind the GSL Programme?	4
Who is the GSL Girls Global Catalyst for?	5
What are the benefits of participating in GSL?	6
Becoming a Participant	7
The Experience	8
The Package	9
After the Programme	10

TEACHER INFORMATION

Booking Students	11
Teacher Costs	12
Alumni Opportunity	14

PARENT/GUARDIAN INFORMATION

Booking Details	15
Frequently Asked Questions	16
Payment Schedule	17
Contact Us	19



“I WILL NEVER FORGET THE INSPIRING PEOPLE I’VE MET AND THE CRAZY, MEMORABLE EXPERIENCES I’VE HAD DURING THESE TWO WEEKS AT WELLINGTON COLLEGE. GSL WILL ALWAYS MEAN THE WORLD TO ME AND BE A HUGE PART OF MY LIFE.”

–Rhea Patil, Dhirubhai Ambani Intl School, India

PROGRAMME INFORMATION

Thank you for your interest in the Global Social Leaders Programme. This pack contains information on all aspects of the programme

What is the Global Social Leaders Programme?

Global Social Leaders (GSL) is a chance for you to change the world for the better through social action and personal development. The GSL programmes are transformational leadership experiences that will inspire you to follow your passion enable you to develop an array of new skills, and be part of a world-wide network of inspiring young leaders.

The programmes are designed to establish a network of inspiring global citizens who are equipped to drive social change in their community through their actions, positive peer influence, and leadership in grassroots projects. Through this unique experience, participants are supported in their own development and are enabled to understand their own unique style as a leader. Bringing together a range of personalities, personal experiences and cultures, GSL helps young people build their self-confidence, improve their English and make lifelong friendships.



Who is behind the GSL Programme?

Future Foundations and the **Wellington Leadership and Coaching Institute** have come together to create an incredible opportunity for the participants to expand their horizons and become leaders with a truly global outlook.



Future Foundations' mission is to inspire young people to achieve their full potential and become leaders in their lives and society. They do this by delivering numerous coaching, mentoring and training programmes across the UK. They bring together participants, partners and staff from a wide range of backgrounds to share resources, knowledge and experience in order to help participants recognise and achieve their potential.

www.future-foundations.co.uk



The **Wellington Leadership and Coaching Institute (WLCI)** develop leaders with the passion, values and skills to serve others and make a positive difference to those around them. There are WLI branches across all Wellington Schools (Wellington Academy, Wellington International Tianjin and Shanghai) and they have proudly worked with over 300 schools around the world, as well as many charities, NGOs, businesses and the British Army

www.wellingtoncollege.org.uk



The GSL Team and Jonathan Harper, CEO of Future Foundations.

Who is the GSL Girls Global Catalyst for?

GSL Girls Global Catalyst is a perfect platform for aspiring young female leaders who want to develop their skills and confidence in an inspiring setting. This unique leadership programme is designed for young girls aged 11-17 from around the world to exchange ideas, consider different

leadership models and discuss how they can make a positive impact on their local community.

The programme's content is carefully prepared and is based on years of experience and been delivered in schools around the world. There are limited spaces per country to ensure a global mix of participants. The UK based GSL experiences are recognised by the top schools around the world as the premier leadership programmes for developing student's leadership skills, global citizenship and for building a global network.

Click [here](#) to view our participants experience at our UK based GSL programmes.



Where is the programme hosted?

The host venue for the programme is Wellington College, one of the world's top coeducational day and boarding schools founded in 1859. Wellington College stands on a 400-acre estate in South- East England, approximately 30 miles (48 km) from Heathrow Airport and close to the town of Reading, Berkshire.

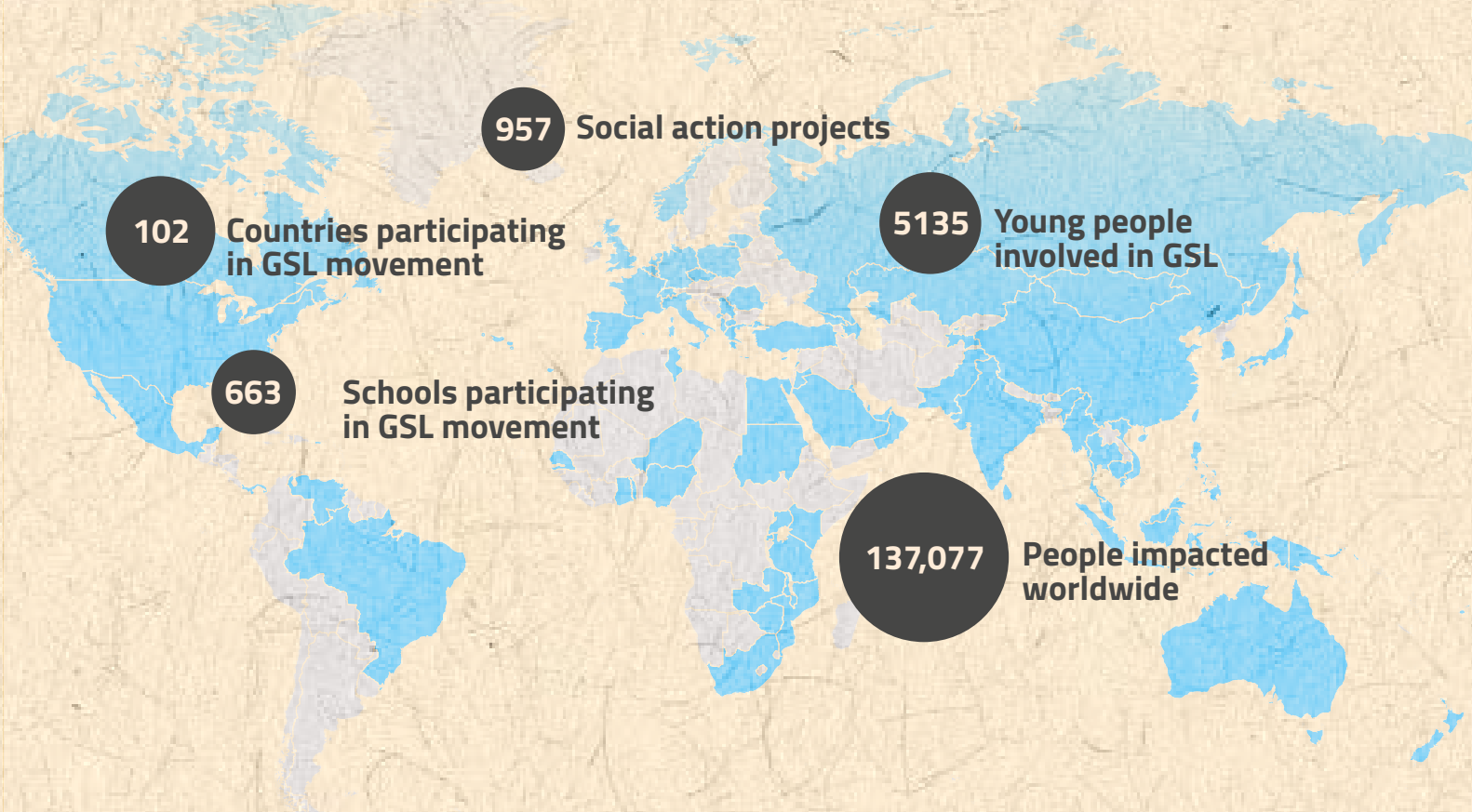
The beautiful grounds are made up of extensive woodland, lakes, immaculate playing fields, fine gardens, an outdoor and indoor swimming pool. The participants and teachers will all stay on-site in Wellington College's boarding houses and this will be the main base for the programme except for off-site excursions.



Where do GSL participants come from?

The participants of the Global Social Leaders movement come from over 100 countries consisting of over 5,000 young people. This is a global movement of socially conscious young leaders, with all world regions represented below in blue.

Click [here](#) to get a glimpse into the global experience we create for young leaders.



What are the benefits of participating in GSL?

- Build on current strengths and identify areas of improvement.
- Build self-confidence.
- Network with business leaders in an inspiring venue.
- Develop leadership and team building techniques.
- Discover new skills and hidden talents.
- Improve communication and language skills.
- Design and manage a project of choice within a short timeframe.
- Stand out in future education or employment selection processes.
- Benefit from small group and personal coaching time.
- Exchange ideas and experiences with like-minded peers of different cultures and backgrounds.
- Join a global network of young leaders.

Becoming a Participant

HOW DO I KNOW IF THIS PROGRAMME IS RIGHT FOR ME?

Here are some questions to consider:

- Do you want to improve your leadership skills?
- Do you want to learn how to be a great leader?
- Do you want to open new opportunities for yourself?
- Are you keen to discover your hidden talents and skills?
- Do you want to learn about social change?
- Do you enjoy meeting new people?
- Are you available on the dates the GSL Girls Global Catalyst is held?
- Will you commit to the programme once selected and to leading a social change project when you return home?

☒

YES? ☐

YES? ☐

YES? ☐

YES? ☐

YES? ☐

YES? ☐

YES? ☐

IF YOU ANSWERED YES TO MOST OF THE QUESTIONS ABOVE THEN CONTINUE READING TO SEE HOW YOU CAN BE PART OF THIS INCREDIBLE EXPERIENCE!

English Level Requirements

We recommend B1 on the CEFR international standard. If you are unsure about the suitability of the programme for your standard of English Language a member of our team would be happy to speak with you directly. Please get in touch with us at: social.leaders@future-foundations.co.uk



“THANK YOU GSL FOR GIVING ME AN UNFORGETTABLE EXPERIENCE AND THE GREATEST FRIENDS AROUND THE WORLD.”

–Supawit Chochchowwat, Mahidol Wittayanusorn School, Thailand

The Experience – Sample itinerary

	AM	PM	EVENING
Day 1	Welcome to Wellington College by Course Director and Meet your team session	Leading Self: Self Awareness, Self Direction and Self Confidence workshops	Country Festival
Day 2	Excursion to Windsor Castle		GSL Inspire An opportunity for students to deliver a speech about an issue they care deeply about
Day 3	Passion for Change Participants identify their passions & explore how these can be a catalyst for change.	Leadership in Action A team challenge session that develops their collaboration, communication and leadership skills.	Talent Show preparation
Day 4	Excursion – London		Free time activities in house
Day 5	Current Scenario Participants learn about Global Issues and the United Nations Global Goals. They will explore the different levels of action and commit to a personal pledge.	The Challenge Participants explore the challenges that previous projects have faced by analysing case studies. They will examine common pitfalls and explore solutions through creative problem-solving.	Talent Show
Day 6	Make it Happen In small groups participants identify a problem they are passionate about and learn the Future Foundations project planning model.	Project Planing A continuation and further in-depth planning session that includes presentation preparation.	Project Presentations Teams present their project ideas and plans to an external panel.
Day 7	Committing to Action Networks of Support workshop	Closing Plenary Private shuttle in a coach to Heathrow Airport	Travel over night

This is a sample programme and is subject to change.

Find out more by visiting our programme website:

WWW.GLOBALSOCIALLEADERS.COM/GIRLSGLOBALCATALYST

The Package

WHAT'S INCLUDED IN THE GIRLS GLOBAL CATALYST COST?

£1695* COST FOR PARTICIPANTS

This includes:

- Full board and accommodation at Wellington College.
- Full board includes breakfast, lunch and dinner plus refreshments.
- Daily timetable of interactive workshops, experiential team tasks, personalised coaching, outdoor activities and evening entertainment.
- A full staff team with a range of academic and professional coaching backgrounds.
- a cultural trip to Windsor Castle
- A sightseeing trip to London
- Access to the facilities and amenities at Wellington College.
- A GSL t-shirt and any material produced for participants on GSL (e.g. handbook, etc.).

*If you would like to pre-order a GSL jumper (hoody) for £25 please let us know before coming to Wellington College. You will also be able to buy them on programme for £35 (limited size and stock)

What is not covered?

- Travel to and from Heathrow Airport unless you purchased a Welcome/Departure Package (see below)
- Travel Insurance, please ensure you are covered for travel insurance
- Visas, flights or airport transfers (transfers can be booked through us)
- Any personal expenses (e.g. souvenirs)

The Welcome/Departure Package:

**£200 FOR INDIVIDUALS
£150 FOR GROUPS (ABOVE 5)**

- Meet & Greet at London Heathrow Airport on Tuesday 31st of March 2020
- Additional night and full board at Wellington College on Tuesday 31st of March 2020
- Transfer to Wellington College
- Transfer to London Heathrow Airport on the final day of the programme



After the Programme

Future Foundations will provide a structure to support the participants once they are back in their home countries, carrying out social action projects. All participants will submit a short evaluation report on their project's progress and special recognition will be given to those that have showed particular initiative in overcoming challenges, or can show how they have had an impact and made a positive change.

As we have seen in previous years, graduates will remain connected after the programme with their newly created network of like-minded peers who will help each other bring to life exciting projects around the world.

SOCIAL ACTION PROJECT

PASSIONATE ABOUT MAKING THE WORLD A BETTER PLACE? ENTER THE GSL GLOBAL GOALS STUDENT COMPETITION

We challenge you to develop and implement a team project that helps to achieve the United Nations' Global Goals in your local community and join a global movement of socially conscious leaders. You will receive expert support and feedback throughout with the chance to win a GSL Catalyst Programme for your school.



* Please note there are 'bursaries' available for siblings, returning schools and early bird bookings. Please get in touch with us via email on social.leaders@future-foundations.co.uk for more information

ENTER GSL GLOBAL GOALS STUDENT COMPETITION
www.globalsocialleaders.com/ggcompetition



TEACHER INFORMATION

We are delighted that you have shown interest in sending your students on our fantastic global programme. The following information guides you through how to book your participant places and your optional teacher places.

Your school can either bring a group (typically 5 to 20 students) with a teacher, or nominate individual students to represent your school (without a teacher).

WHAT DO I NEED TO DO?

Simply tell your school about it, select the participants and alumni (if applicable) you want to attend and then book your places.

Selecting Students

When making your selection, it is important to consider the following points:

- Is the student committed to social change?
- Does the student have the capability to be a future leader?
- Will the student completely commit to the programme once selected?
- Is the student available for all the course dates?

Once you have selected the participants to attend the programme, you need to fill out a school booking form by clicking the button on the right.

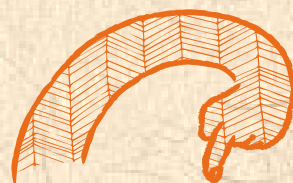
We provide 24h pastoral care during the during the GSL Girls Global Catalyst so if you cannot organise a school group we encourage you to nominate students to attend as individuals. Please click on the button on the right hand side to nominate students.

We can share resources such as a GSL assembly presentation, flyers, posters and videos to raise awareness in your school.

Please contact us to gain access to these resources at: social.leaders@future-foundations.co.uk

"I MISS ALL THE GSL TEAM AND WELLINGTON COLLEGE. THE MEMORIES WILL ALWAYS STAY IN MY HEART DEEPLY".

—Feixuan Chi, The High School Affiliated to Renmin University of China, China



SCHOOL BOOKING FORM >>

<https://podio.com/webforms/19996991/1357516>

NOMINATION FORM >>

www.globalsocialleaders.com/nomination

Can I attend with my students?

Yes, we encourage teachers to attend with their students which will help to ensure you can embed their experience back into the learning at your school.

We have found that the teachers enjoy this programme just as much as the participants and come away with lots of learning, new skills and having had a lot of fun. We also find on these kinds of programme participants see their teachers in a different light and it really builds bonds and breaks down barriers between participants and teachers. A fantastic experience all round.

Typically a school group would attend with 5 to 20 students and 1 to 2 teachers. So for example, if you wanted to send up to 10 participants, they would be accompanied by 1 to 2 teachers.

We have also had individual participants and groups travel unaccompanied and can make arrangements to meet your group at the airport for both arrival and departure if a teacher is unable to accompany your group as part of a welcome and departure package.

£495*

COST FOR TEACHERS

This includes:

- Full board and accommodation at Wellington College for 7 days and 6 nights
- GSL Advisor masterclass session
- Full access to the main programme

* Cost does not include visa, flights or airport transfers (transfers can be booked through us - see welcome/ departure package on page 7).

FOR GROUPS OF 10 STUDENTS WE OFFER ONE FREE TEACHER PLACE





WE HAVE STUDENTS FROM PREVIOUS GSL PROGRAMMES, CAN THEY APPLY TO ATTEND AGAIN?

£395*

COST FOR ALUMNI

This includes:

- Full board and accommodation at Wellington College.
- Full board includes breakfast, lunch and dinner plus refreshments.
- The opportunity to inspire the next generation of global social leaders.
- Invaluable leadership and mentoring experience
- A GSL t-shirt, any material produced for participants on GSL (e.g. handbook, etc.)

* Cost does not include visa, flights or airport transfers (transfers can be booked through us - see welcome/ departure package on page 7).

How can participants benefit from returning as alumni?

- Returning as alumni gives participants a chance to experience peer mentoring, be a role model, and inspire the next generation of social leaders.
- As part of the GSL Girls Global Catalyst team, alumni will be guaranteed a unique volunteering opportunity. We promise a fast-paced nurturing environment that will accelerate their growth as leaders and offer an excellent addition to their professional CV.

Here's how they can apply:

- Alumni need to complete the form on our website to apply for a place: www.globalsocialleaders.com/gslambassador
- Due to the popularity of this role, there are limited places and we will allocate places in order of registration.

"I WANTED TO RETURN TO GSL BECAUSE I LOVE THE ENVIRONMENT AND THE VIBE. I FIND IT SO INCREDIBLE HOW MUCH EVERYBODY DEVELOPS AND WHAT WE CAN ALL ACHIEVE IF WE HAVE THE FREEDOM AND THE RIGHT SURROUNDINGS TO FULLY BE OURSELVES. MOREOVER, I WANTED TO HELP THE PARTICIPANTS TO REACH THEIR FULL POTENTIAL AND GET EVERYTHING THEY CAN OUT OF GSL, AND EVERYONE ALWAYS INSPIRES ME SO MUCH. I AM AMAZED BY THE COACHES, SO COMING BACK, I WAS VERY INTERESTED IN THE COACHING SIDE OF GSL WHICH WAS JUST AWESOME TO SEE."

—Hannah, GSL Ambassador

PARENT/GUARDIAN INFORMATION

We are really excited that you are considering sending your child on our programme.

We realise that this may be the first time they have travelled abroad without you so if you have any concerns that are not answered in this document, please email us at:

social.leaders@future-foundations.co.uk

Or visit the GSL website to start a chat with one of our team (UK office hours).



How does my child book a place?

Your child may attend the Girls Global Catalyst either as an individual or as part of a school group booking.

Attending with a school/organisation group

If attending with a school/organisation group, your child's school will be responsible for selecting who will attend the programme. They will then book your child's place with us, on your behalf. We will typically take payment directly from the school to confirm the place, however in some cases we do collect payments for group bookings. This will be advised by your school.

Attending as an individual participant

If attending as an individual, your child will need to apply on our website as an individual participant. We will then review the application, and confirm with you and your child. To apply for a place please visit:

APPLY FOR A PLACE
www.globalsocialleaders.com/join



For all participants we will ask parents to complete a parent consent and personal details form. This gives us the information we need to issue invitation letters. All participants will be asked to complete a 'confirmation of place' to confirm they accept their place, agree with our code of conduct, submit an e-bio and confirm their t-shirt size.

Frequently Asked Questions

Here are the most frequently asked questions.

Please visit [The Welcome Pack](#) to view more.

What does full board mean?

This means breakfast, lunch, and dinner will be provided each day.

Where do participants stay at night?

The programme will be held at Wellington College in Berkshire. Participants will be staying in school boarding houses for the duration of the programme. Boys and girls will stay in separate, single-sex accommodation. Staff will be on a duty rota during the night to ensure the safety of participants.

How do you look after the well-being of participants on the programme?

Future Foundations consider the happiness and safety of children as our top concern. On all our residential programmes we have a dedicated Pastoral Team, with Female Head of House, and a Male Head of House, who will take care of the young people.

We choose the staff that work for us very carefully, and we have a core team of very experienced staff who will be working on programmes who have full training on Safeguarding and Welfare.

What should my child bring?

We will provide a detailed list of everything they will need to bring in the Welcome Pack, including a packing list. Future Foundations will provide all equipment necessary for the programme.

How do you make sure the programme is safe for young people?

Future Foundations takes the safety of all young people and staff involved in programmes very seriously. Future Foundations designs and delivers a wide variety of one day and multi-day residential programmes for thousands of young people to help prepare them navigate the challenges that young people face. We find inspiring venues and staff, manage logistics, risk assessments and everything else needed in order to deliver high quality training programmes.

All activities undertaken during the Future Foundations GSL Programme have been designed and fully risk assessed to ensure maximum safety for all participants and staff. Future Foundations and associated staff are fully trained to observe safety procedures including Future Foundations' General Code of Practice and Child Protection Policies. For more information on how we ensure everyone's safety please refer to the 'Ensuring Safety' section on our website.

Do you insure personal belongings?

We are not able to insure personal belongings brought onto the programme. For this reason, we do not recommend that participants bring any expensive pieces of equipment or unnecessary valuables with them.

(e.g. mobile phones, jewellery and/or other electronic equipment). Participants do so at their own risk and Future Foundations will not be held liable in the event that any item or money goes missing.

Payment Schedule

OPTION 1

All at once

Full payment of course fees*

OPTION 2

Deposit + 1 installment

£500 deposit* followed by one payment in a month's time for the remaining balance

* All bookings require a non-refundable deposit of £500 to be paid

Cancellation

More than 12 weeks' notice before the programme start date: Full refund of programme cost

- 8 weeks notice before the programme start date: 50% refund of programme cost
- Less than 8 weeks' notice before the programme start date: Non refundable

For more terms & conditions please visit:

www.globalsocialleaders.com/terms/#girls-global-catalyst



“THANK YOU GSL FOR GIVING ME AN UNFORGETTABLE EXPERIENCE AND THE GREATEST FRIENDS AROUND THE WORLD.”

—Supawit Chochchowwat, Mahidol Wittayanusorn School, Thailand

WHICH
SOMEBODY
ARE YOU?



**GLOBAL
SOCIAL
LEADERS**

WWW.GLOBALSOCIALLEADERS.COM

IF YOU HAVE ANY QUESTIONS, PLEASE CONTACT US ON:


- Email: social.leader@future-foundations.co.uk
- Telephone: +44 (0) 20 34 32 34 50

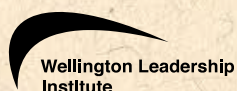
FOLLOW OUR UPDATES ONLINE:

Using our hashtag:

#GSLGOALS

And follow our social media channels:

-  Facebook: facebook.com/GlobalSocialLeaders
-  Instagram: instagram.com/GlobalSocialLeaders
-  Twitter: twitter.com/FutureFound



www.future-foundations.co.uk
social.leaders@future-foundations.co.uk

+44 (0)20 34 32 34 50

Shakespeare House, 168 Lavender Hill,
London, SW11 5TG, United Kingdom